

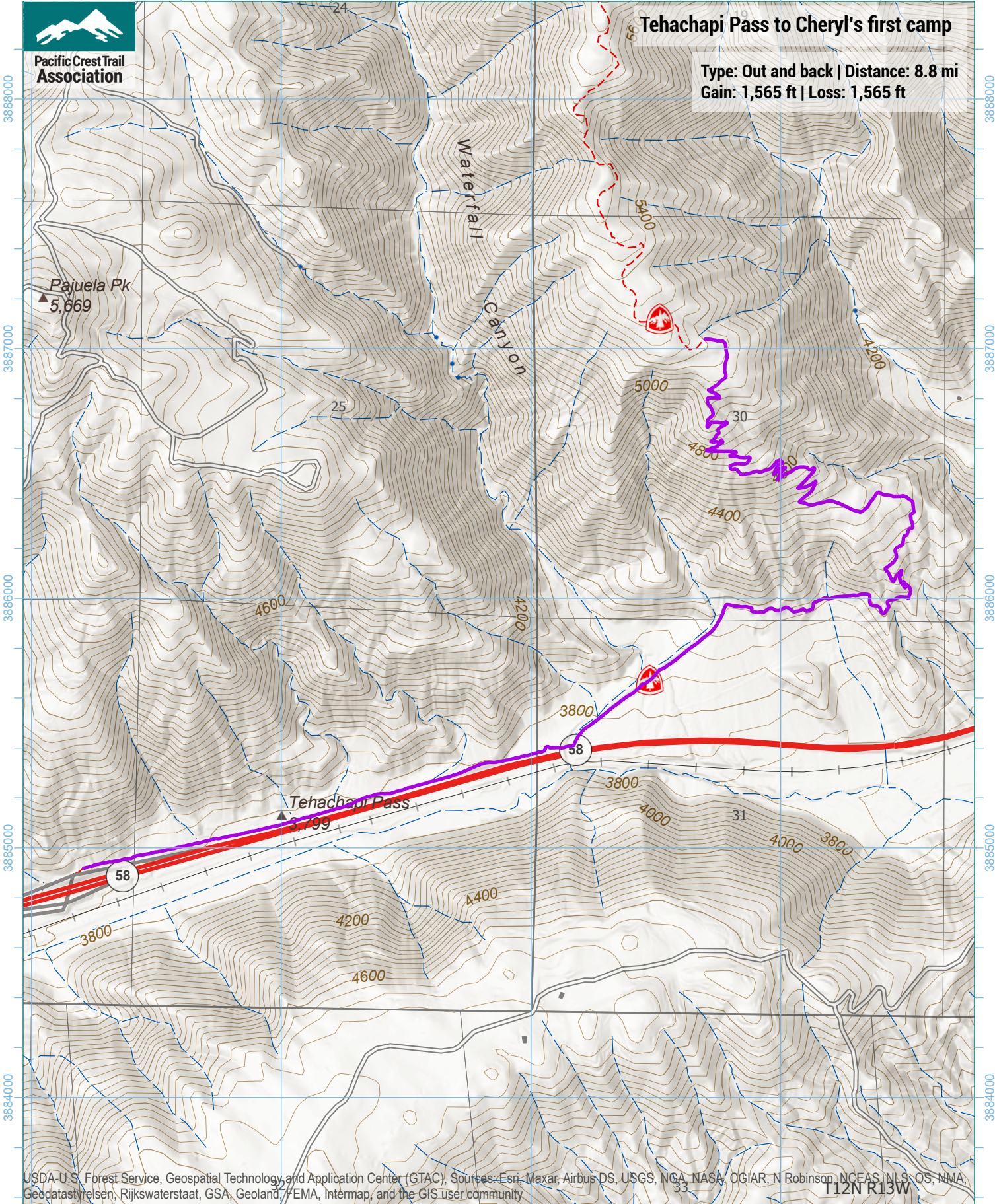
382000 383000 384000 385000



Pacific Crest Trail Association

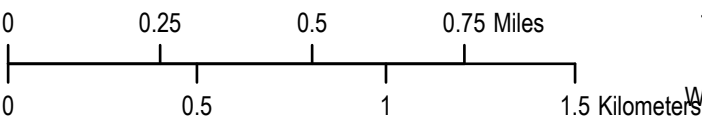
Tehachapi Pass to Cheryl's first camp

Type: Out and back | Distance: 8.8 mi
Gain: 1,565 ft | Loss: 1,565 ft

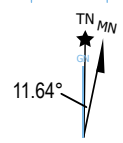


USDA-U.S. Forest Service, Geospatial Technology, and Application Center (GTAC). Sources: Esri, Maxar, Airbus DS, USGS, NGA, NASA, CGIAR, N Robinson, NCEAS, NLS, OS, NMA, Geodatasjirelsen, Rijkswaterstaat, GSA, Geoland, FEMA, Intermap, and the GIS user community

382000 383000 384000 385000



1 inch equals 1,667 feet
1:20,000
WGS 1984 UTM Zone 11N



Trip data by PCTA
Basemap by US Forest Service
Contour interval: 40ft